

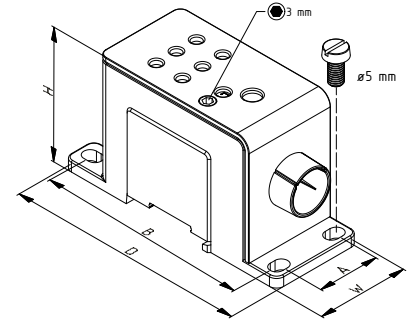


# PDB<sup>+</sup> – the new Line

Power distribution – finger-safe and individually adjustable

# PDB+ – the New Line

**Innovative and shapely.** With the new single-pole compact distribution block of FTG engineering excellence meets modern design! Many new innovative refinements and thoughtful details, such as color marking plates for N, PE, etc., selectable phase identification and practical locking clip for DIN rail mounting offers and facilitate the work on the cabinet.

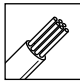
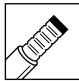



- Adjustable Dial allows for Selection of L1–L2–L3 phase designation
- Color Marking Plates in Green, Blue or Red for designation of Ground, Neutral or DC Power
- Simple and secure DIN Rail locking clip allows easy mounting on DIN Rail
- Incoming Cable Safety Slide assures IP20 protection with all conductor sizes
- Connection Clip included with each PDB for Multipole applications
- Suitable for Aluminium and Copper conductors




## Technical Data

Standard	IEC 60947-7-1
Voltage Rating	1000VAC / 1500VDC
Block Material	Tin plated Aluminium
Suitable Conductors	Copper or Aluminium
Housing Colour	light grey / dark grey

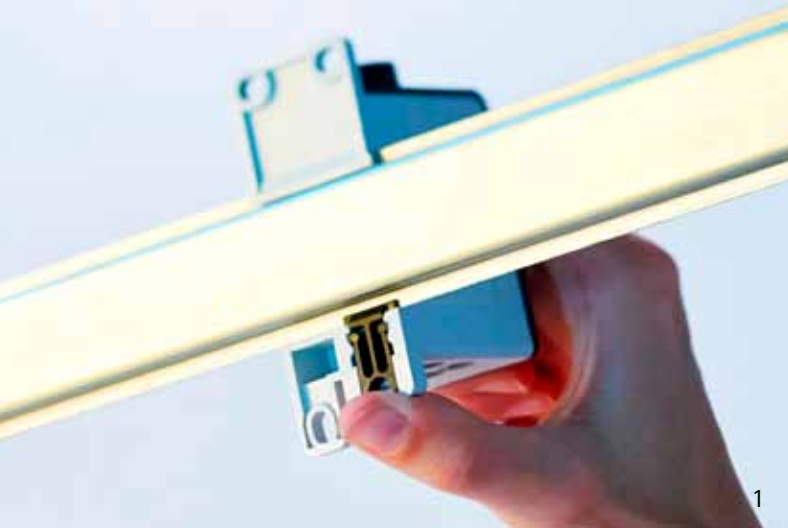


Part #	In (A)	Ø (mm)	Cross section (mm <sup>2</sup> )		A (mm)	B (mm)
						
38680	80 A Cu 63 A Al	1 x 10.5 mm	2.5 mm <sup>2</sup> - 25 mm <sup>2</sup> / 14 AWG - 3 AWG	2.5 mm <sup>2</sup> - 25 mm <sup>2</sup> / 14 AWG - 3 AWG	23.2	79.2
38680C*		6 x 4.4 mm	1.5 mm <sup>2</sup> - 10 mm <sup>2</sup> / 14 AWG - 8 AWG	1.0 mm <sup>2</sup> - 6 mm <sup>2</sup> / 18 AWG - 10 AWG		
38682	125 A Cu 100 A Al	1 x 10.5 mm	2.5 mm <sup>2</sup> - 50 mm <sup>2</sup> / 14 AWG - 1 AWG	2.5 mm <sup>2</sup> - 35 mm <sup>2</sup> / 14 AWG - 2 AWG	23.2	79.2
38682C*		6 x 7.0 mm	2.5 mm <sup>2</sup> - 25 mm <sup>2</sup> / 14 AWG - 4 AWG	2.5 mm <sup>2</sup> - 16 mm <sup>2</sup> / 14 AWG - 6 AWG		
38684	175 A Cu 135 A Al	1 x 12.5 mm	2.5 mm <sup>2</sup> - 70 mm <sup>2</sup> / 14 AWG - 2/0 AWG	2.5 mm <sup>2</sup> - 50 mm <sup>2</sup> / 14 AWG - 1/0 AWG	23.2	88.7
38684C*		4 x 8.5 mm	2.5 mm <sup>2</sup> - 35 mm <sup>2</sup> / 14 AWG - 2 AWG	2.5 mm <sup>2</sup> - 25 mm <sup>2</sup> / 14 AWG - 4 AWG		
38686	250 A Cu 200 A Al	1 x 16.5 mm	35 mm <sup>2</sup> - 120 mm <sup>2</sup> / 2 AWG - 250 kcmil	35 mm <sup>2</sup> - 70 mm <sup>2</sup> / 2 AWG - 2/0 AWG	41.2	103.7
38686C*		6 x 8.5 mm	2.5 mm <sup>2</sup> - 35 mm <sup>2</sup> / 14 AWG - 2 AWG	2.5 mm <sup>2</sup> - 25 mm <sup>2</sup> / 14 AWG - 4 AWG		
38688	415 A Cu 360 A Al	1 x 22.5 mm	70 mm <sup>2</sup> - 240 mm <sup>2</sup> / 2/0 AWG - 500 kcmil	70 mm <sup>2</sup> - 185 mm <sup>2</sup> / 2/0 AWG - 400 kcmil	41.2	103.7
38688C*		6 x 8.5 mm	2.5 mm <sup>2</sup> - 35 mm <sup>2</sup> / 14 AWG - 2 AWG	2.5 mm <sup>2</sup> - 25 mm <sup>2</sup> / 14 AWG - 4 AWG		

\* Part numbers with C are delivered with the marking plates blue, red and green. 

C38BL	Marking plate blue 
C38RT	Marking plate red 
C38GN	Marking plate green 





1



2



3



4

1 Safe mounting on DIN Rail through DIN Rail locking clip | 2 Safety Slide assures IP20 protection with all conductor sizes | 3 Integrated, adjustable phase marking  
4 Connection Clips secure single pole PDBs for multiphase applications

FTG - Friedrich Göhringer  
Elektrotechnik GmbH  
Gerwigstr. 8  
DE-78098 Triberg  
Germany  
Tel.: +49 (0) 7722 96 36 0  
Fax: +49 (0) 7722 96 36 36  
[www.ftg-germany.de/en](http://www.ftg-germany.de/en)

